

whitco

Whitco Catering & Bakery Equipment Ltd

Cottingham Way, Thrapston, Northants NN14 4PL • T: 01 832 735007 • F: 01 832 734433 • info@whitcoltd.com • www.whitcoltd.com

Working in conjunction with

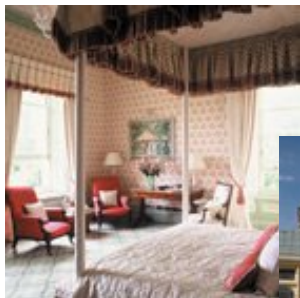


Index

- The Brief
- Design Layout
- Why Whitco

Whitco Catering & Bakery Equipment Ltd

Cottingham Way, Thrapston, Northants NN14 4PL • T: 01 832 735007 • F: 01 832 734433 • info@whitcoltd.com • www.whitcoltd.com



Kilworth House Theatre

The Brief

- To design a kitchen within a log cabin which was to be taken down in Scotland and rebuilt on the grounds of Kilworth, incorporating machines for private banqueting and pre theatre ala carte buffets.

Challenges

- Services required;
- Carrying the equipment across open countryside and up scaffolding.
- On arrival and rebuild of the Log Cabin, we discovered that the internal dimensions were slightly smaller causing last minute changes prior to the scheduled opening.
- All fabrication was bespoke.
- Ductwork from the extraction system was placed so that it was not visible to the public and all smells diverted from them. Noise reduction was also of paramount importance.

The authentic log cabin restaurant, 'The Staging Post', is idyllically situated next to the theatre. This unique facility provides corporate hospitality at its very best for up to 50 persons both pre-show and during the interval.

This exceptional venue may be booked for a delicious 3 course pre-theatre buffet (minimum 30 covers), providing the perfect way to exclusively entertain your VIP guests - or simply to enjoy the company of friends with a special social gathering - on a beautiful summer's evening.

Complete with bar, kitchen and cloakrooms, The Staging Post has a wonderfully warm and welcoming atmosphere with guests free to stroll outside onto the veranda to delight in the beautiful woodland surroundings.

The Staging Post may also be hired outside of the theatre season on a year round basis for a drinks reception or dinner.



The Staging Post



Pre-Theatre Drinks



Pre-Theatre Dining



Pre-Theatre Drinks

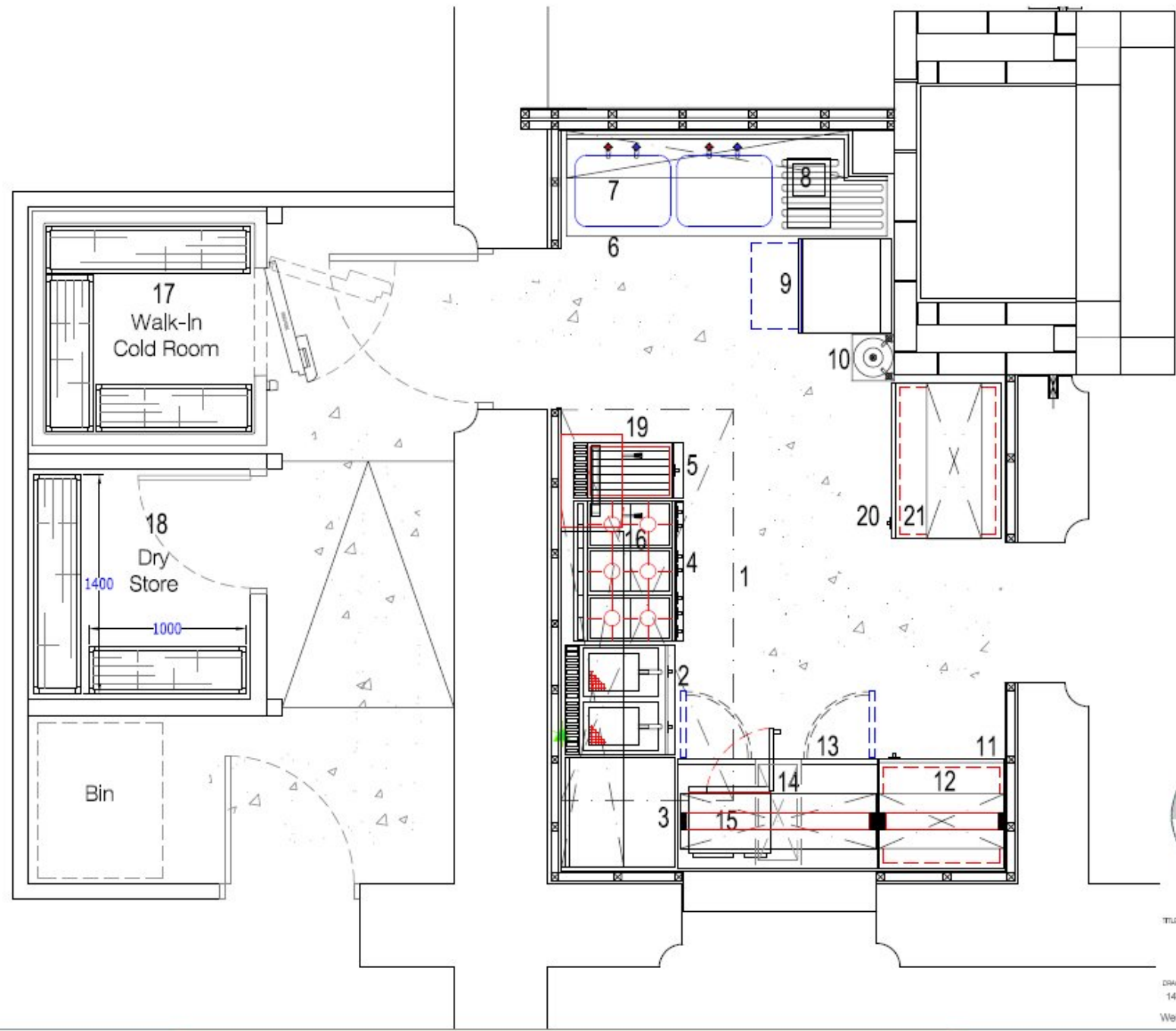


Pre-Theatre Dining

Design Layout

EQUIPMENT SPECIFICATION

1. EXTRACTION CANOPY
2. DOUBLE FRYER
C/W SPLASH GUARD
3. S/S WALL BENCH
4. SIX BURNER OVEN RANGE
5. FREESTANDING CHARGRILL
6. DBSD SINK UNIT
7. S/S WALL SHELF
8. WATER SOFTENER
9. DISHWASHER C/W STAND
10. WASH HAND BASIN
11. HOTCUPBOARD
12. TWO TIER GANTRY
(BOTTOM HEATED, TOP AMBIENT)
13. TWO DOOR REFRIGERATED BENCH
(BOTTOM HEATED, TOP AMBIENT)
14. TWO TIER GANTRY
(BOTTOM HEATED, TOP AMBIENT)
15. MICROWAVE OVEN
16. POT SHELF
17. WALK-IN COLD ROOM
C/W RACKING (BY OTHERS)
18. DRY STORE RACKING
19. SALAMANDER GRILL
20. HOTCUPBOARD UNIT
(FOOD HOLDING CABINET)
21. TWO TIER GANTRY
(BOTTOM HEATED, TOP AMBIENT)



TITLE
**KILWORTH HOUSE
 LOG CABIN KITCHEN LAYOUT**

DRAWING NO. 1468-B DESIGNED BY LM DATE 30/05/07 SCALE A3@1:25

Web Address: <http://www.whitco.co.uk> Email: sales@whitco.co.uk

Testimonial

“Whitco successfully completed the kitchen installation at the above project in 2007, working to a tight installation schedule, this compact kitchen installation was well designed fulfilling all the needs of the Chef and Kitchen Staff and was brought in on time and on budget. Yet another successful team effort by Whitco.”

Richard Coppock
Associate Director, Corporate Architecture Ltd

Why Whitco.....

Summary

- We believe that as an independent distributor with a wealth of expertise, and not limited to one manufacturer, we provide a non-biased and comprehensive service.
- Whitco is wholly supported by the major manufacturers and work within their guidelines.
- Our proactive and solution driven approach to business ensures customer satisfaction.

Our Promise

- We guarantee that everyone will receive the same high level of professionalism upon which our reputation is based.



INVESTORS IN PEOPLE

