



## Oundle School

New purpose-built conferencing and  
banqueting building

The design a modern kitchen and dining facility, within the new purpose-built conferencing and banqueting building at the internationally acclaimed school, represents one of our most prestigious installations of 2007. Jayne and Isabella were largely responsible for the planning, design and co-ordination of the project, from the start, approximately 18 months ago through to completion and opening on 26 October. The complex installation was completed within four weeks, the bulk of the work being done during the school's half-term break. Careful consideration was given to the specification of the catering equipment, all from the industry's leading manufacturers and encompassing the latest technology, so that the staff could deliver a varied menu to a wide clientele - from the school's students and staff, through to high profile personnel and to cater for special celebrations and events throughout the year.

### Summary

- We believe that as an independent distributor with a wealth of expertise, and not limited to one manufacturer, we provide a nonbiased and comprehensive service.
- Whitco is wholly supported by the major manufacturers and work within their guidelines.
- Our proactive and solution driven approach to business ensures customer satisfaction.

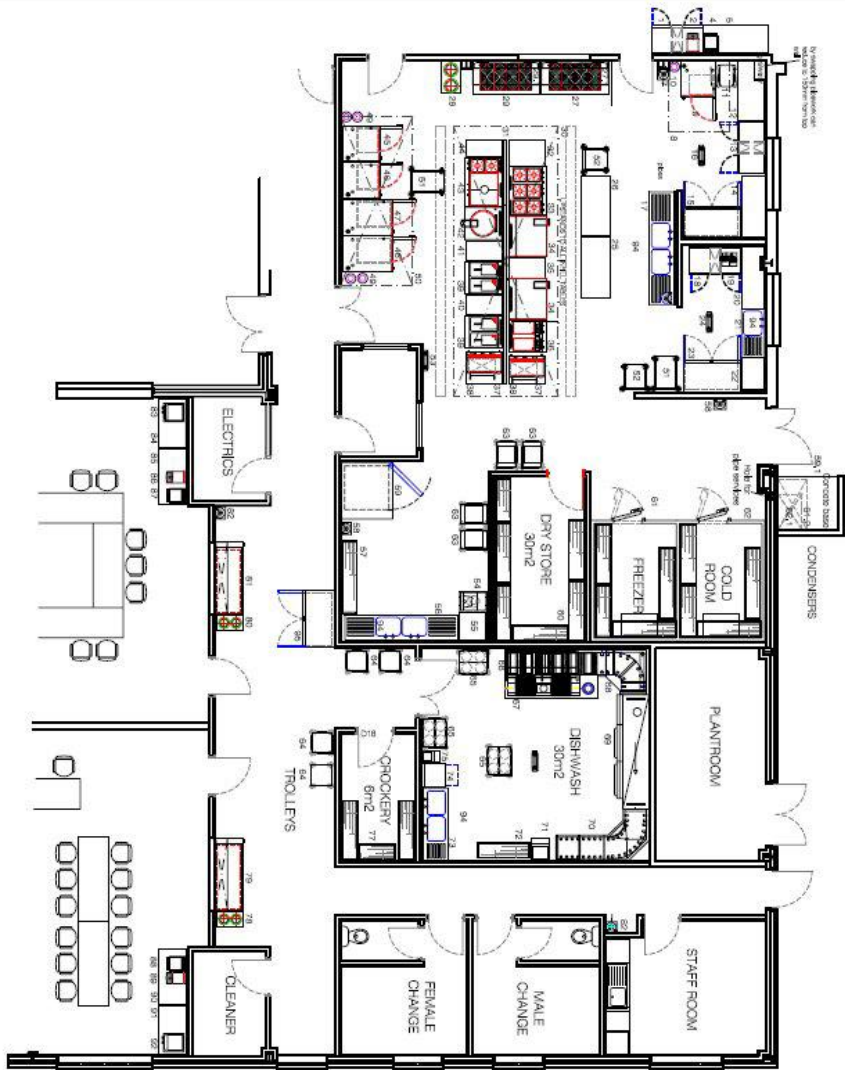
For more information contact:

Whitco Catering & Bakery equipment Limited,  
Cottingham Way, Thrapston  
Northants NN14 4PL

Tel: +44(0)1832735007  
Fax: +44(0)1832734433  
Email: [info@whitcoltd.com](mailto:info@whitcoltd.com)



**OUNDL**  
School



**EQUIPMENT SPECIFICATION**

1. REFRIGERATED BENCH FRIDGE
2. REFRIGERATED UNIT
3. SPARE NO.
4. MILK PERGOLA
5. SPARE
6. SPARE
7. WASH HAND BASIN
8. EXTRACTION CANOPY
9. **(FIELD CHOICE)**
10. WATER TREATMENT UNIT
11. WAREWASH BENCH
12. WAREWASH BENCH
13. REFRIGERATED BENCH FRIDGE
14. SS WALL BENCH MEMBRANE FOR FLY MULLER
15. DDDO SINK UNIT
16. DDDO SINK UNIT
17. COW WASH TUB BENCH FRIDGE
18. MEAT SLICER
19. MEAT SLICER
20. SHAVED SS WALL BENCH
21. SS WALL BENCH
22. SS WALL BENCH
23. SS WALL BENCH
24. FLY MULLER
25. SS WALL BENCH
26. DOUBLE LIGHT REFRIGERATOR
27. HEATED GLASS TOP SERVERY UNIT
28. HEATED GLASS TOP SERVERY UNIT
29. TEMPERED GLASS TOP SERVERY UNIT
30. HEATED GANTRY COW SHEED SCREEN
31. SERVICE SINK
32. SS WALL BENCH
33. SS WALL BENCH
34. 818 BURNER OVEN RANGE
35. **(1 x FIELD CHOICE, 1 x WHITCO)**
36. SS WALL BENCH
37. SS WALL BENCH
38. SS WALL BENCH
39. SS WALL BENCH
40. COW OVERSHELF
41. SS WALL BENCH
42. BURNING PAN
43. BURNING PAN
44. SS WALL BENCH
45. 26 21 COMBI OVEN
46. 26 21 COMBI OVEN
47. 26 21 COMBI OVEN
48. DDDO WATER TREATMENT UNIT
49. EXTRACTION CANOPY
50. EXTRACTION CANOPY
51. DDDO 26 21 COMBI TROLLEY
52. DDDO TROLLEY
53. FLY MULLER
54. WASTE DISPOSAL UNIT
55. WASTE DISPOSAL UNIT
56. WASTE DISPOSAL UNIT
57. FOUR TIER RACKING
58. DRY STORE
59. DRY STORE
60. DRY STORE
61. WALK IN FREEZER COW RACKING
62. WALK IN FREEZER COW RACKING
63. WALK IN FREEZER COW RACKING
64. WALK IN COOL ROOM COW RACKING
65. WALK IN COOL ROOM COW RACKING
66. WALK IN COOL ROOM COW RACKING
67. WALK IN COOL ROOM COW RACKING
68. WALK IN COOL ROOM COW RACKING
69. WALK IN COOL ROOM COW RACKING
70. WALK IN COOL ROOM COW RACKING
71. WALK IN COOL ROOM COW RACKING
72. WALK IN COOL ROOM COW RACKING
73. WALK IN COOL ROOM COW RACKING
74. WALK IN COOL ROOM COW RACKING
75. WALK IN COOL ROOM COW RACKING
76. WALK IN COOL ROOM COW RACKING
77. WALK IN COOL ROOM COW RACKING
78. WALK IN COOL ROOM COW RACKING
79. WALK IN COOL ROOM COW RACKING
80. WALK IN COOL ROOM COW RACKING
81. WALK IN COOL ROOM COW RACKING
82. WALK IN COOL ROOM COW RACKING
83. WALK IN COOL ROOM COW RACKING
84. WALK IN COOL ROOM COW RACKING
85. WALK IN COOL ROOM COW RACKING
86. WALK IN COOL ROOM COW RACKING
87. WALK IN COOL ROOM COW RACKING
88. WALK IN COOL ROOM COW RACKING
89. WALK IN COOL ROOM COW RACKING
90. WALK IN COOL ROOM COW RACKING
91. WALK IN COOL ROOM COW RACKING
92. WALK IN COOL ROOM COW RACKING
93. WALK IN COOL ROOM COW RACKING
94. WALK IN COOL ROOM COW RACKING
95. WALK IN COOL ROOM COW RACKING
96. WALK IN COOL ROOM COW RACKING
97. WALK IN COOL ROOM COW RACKING
98. WALK IN COOL ROOM COW RACKING
99. WALK IN COOL ROOM COW RACKING
100. WALK IN COOL ROOM COW RACKING

PROPOSED KITCHEN LAYOUT  
 QUINDE SCHOOL  
 Head Office:  
 Confringham Way, Tipton  
 Wolverhampton, West Midlands, S81 4LJ, UK  
 Tel: 01827 793007 - www.whitco.co.uk  
 Head Office:  
 Confringham Way, Tipton  
 Wolverhampton, West Midlands, S81 4LJ, UK  
 Tel: 01827 793007 - www.whitco.co.uk  
 Head Office:  
 Confringham Way, Tipton  
 Wolverhampton, West Midlands, S81 4LJ, UK  
 Tel: 01827 793007 - www.whitco.co.uk

